

— ITALY *Porcelain Pavers* —



CANCOS
TILE & STONE



Wood MAPLE

NON-STOCK / SPECIAL ORDER (5-6 WEEKS)



PAVWOMA24



| 24 x 24 |

PAVWOMA848



| 8 x 48 |

PAVWOMA1648



| 16 x 48 |

Wood NUT

NON-STOCK / SPECIAL ORDER (5-6 WEEKS)



PAVWONU24



| 24 x 24 |

PAVWONU848



| 8 x 48 |

PAVWONU1648



| 16 x 48 |

Wood OAK

NON-STOCK / SPECIAL ORDER (5-6 WEEKS)



PAVWOOA24



| 24 x 24 |

PAVWOOA848



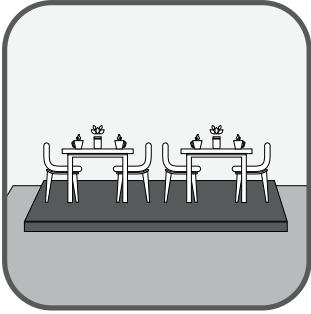
| 8 x 48 |

PAVWOOA1648

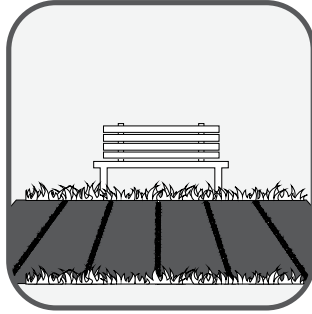


| 16 x 48 |

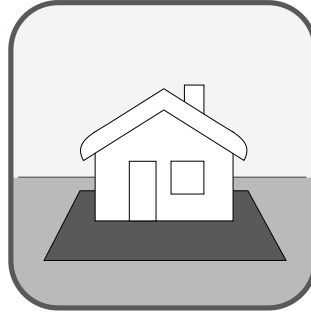
where to install
2CM PORCELAIN PAVERS



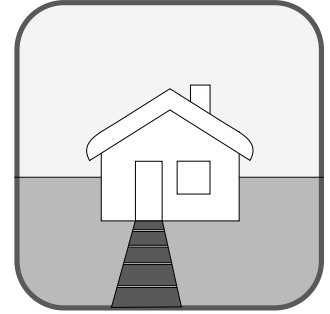
Sidewalk cafes



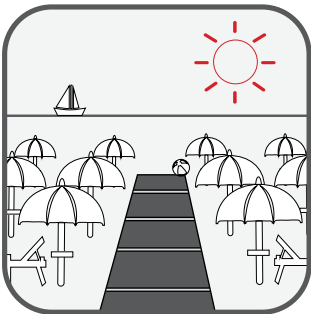
Walkways and pathways



Gardens and patios



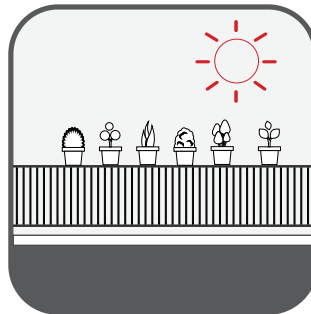
Garden paths



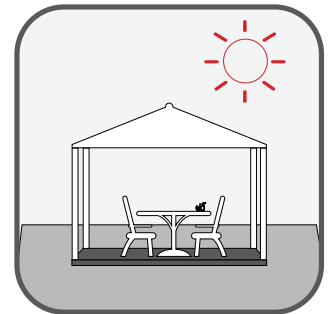
Beach resorts



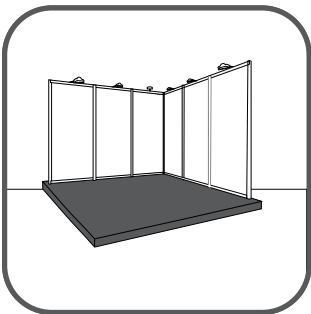
Swimming-pools



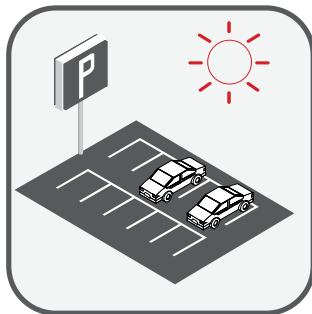
Terraces and balconies



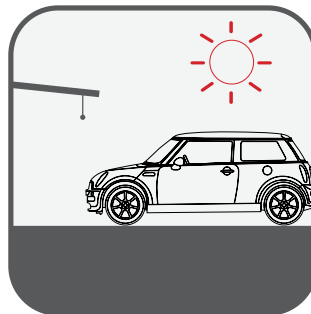
Gazebos



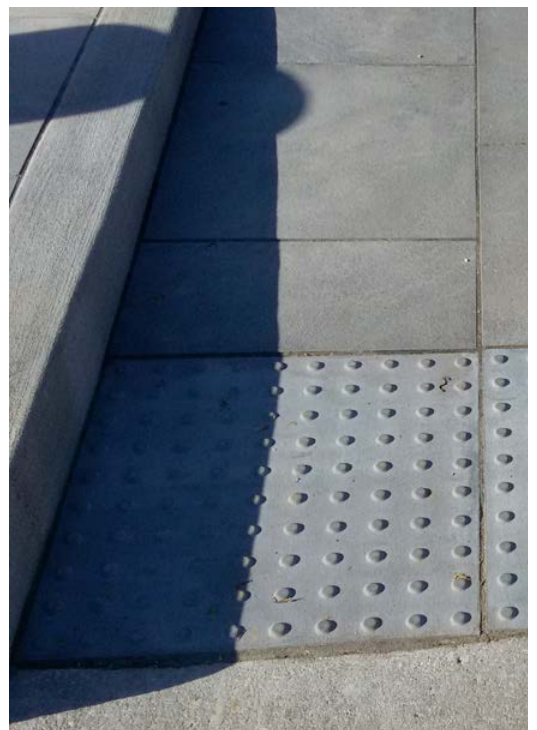
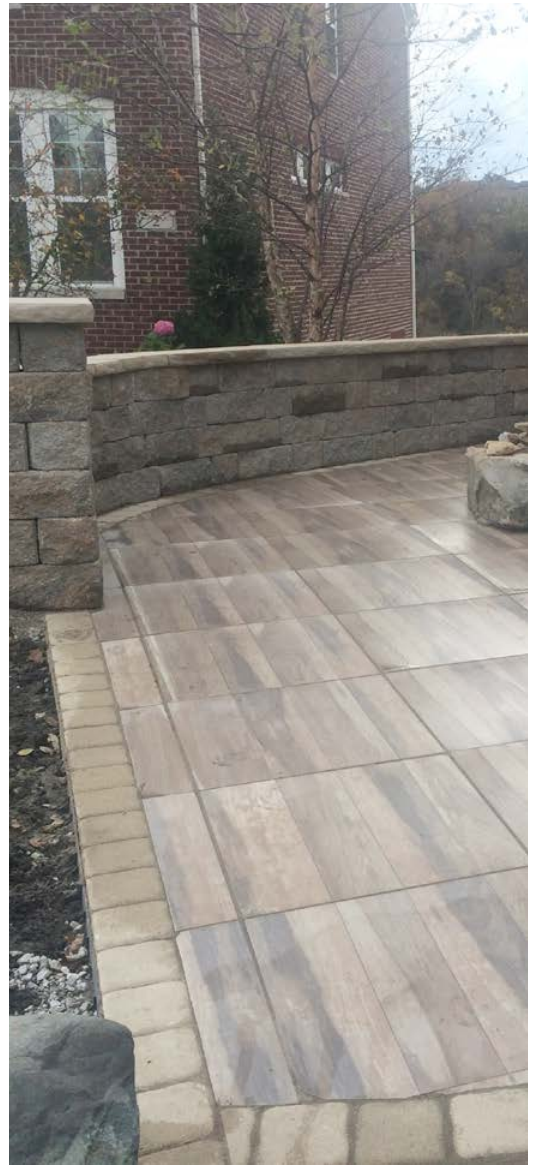
Exhibitions and events



Public parks



Public parkings



why choose 2CM PORCELAIN PAVERS?



Thermal shock resistant.
(-40°F - 210°F)



Superior in fire resistance
and durability to wood tiles



Easy to clean. Stain,
chemical and salt resistant



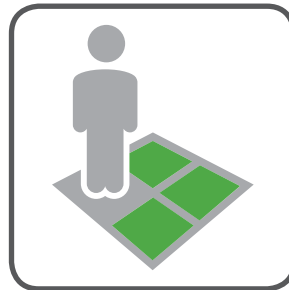
Superior in strength and
impact resistance to
ceramic tiles (supports over
2000lb), lighter and easier
to handle than concrete
blocks



Virtually no maintenance



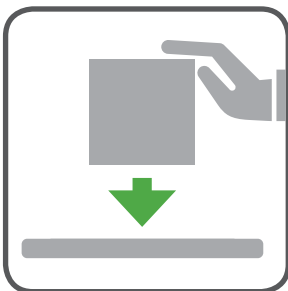
Slip resistant and quick
draining



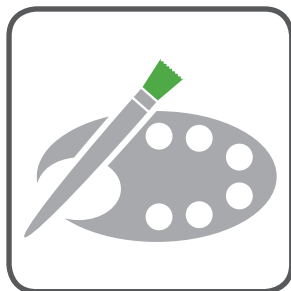
Easy to install



Removable and reusable
POPA 2.0 is ideal both for
temporary flooring and for
permanent flooring



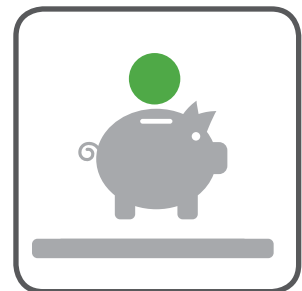
Versatile installation.
Various installation methods
including pedestal set,
gravel and grass set.
They offer endless
opportunities for landscape
design creativity in both
domestic and commercial
applications.



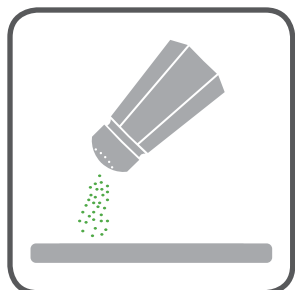
Fade resistant



Available in a broad range
of colors/styles



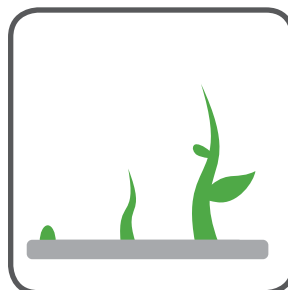
Massive over life cost
savings more cost effective
than grating or grid
structures for elevated
paving installations



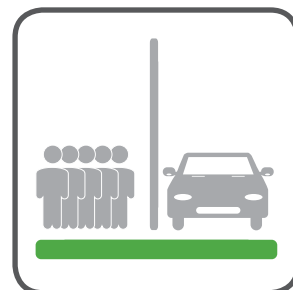
Resistant to salt corrosion.



Resistant to attack from mould, moss and verdigris treatments.



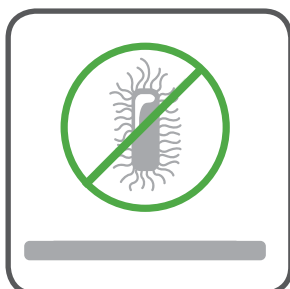
Resistant to efflorescence and other marks.



Durable: resistant to heavy vehicle and pedestrian traffic.



Frost-proof.



Hypoallergenic. No VOC.



Easy to sterilize.



Eco-friendly maintenance.



Easy to clean.



Recyclable and ecological.



New solution in extra-thick porcelain stoneware for outdoor trilling. 2 cm thick, colored fine porcelain stoneware slabs obtained from atomizing high-class clays, quartzes and metal oxides pressed at 400 kg/cm², completely sintered at a temperature of 1200°C and then squared using a system of abrasive grinders.

technical characteristics of 2CM PORCELAIN PAVERS

STANDARDS



ISO 10545-3	Water absorption	$E < = 0,5 \%$	0,05 %
ISO 10545-9v	Thermal shock resistance	Requested	Complies with standard
ISO 10545-12	Frost resistance	Requested	Complies with standard
ISO 10545-6	Abrasive wear	$< 175 \text{ mm}^2$	139 mm^2
ISO 10545-2	Thickness	$\pm 5,0 \%$ MAX	Complies with standard
	vvLength and width	$\pm 0,6 \%$ MAX	Complies with standard
ISO 10545-4	Bending strength	$S_p > / = 7,5 \text{ mm}$ $S > / = 1300 \text{ N}$	S 10.000 N sp. 15 S 13.600 N sp. 20
ISO 10545-14	Resistance to stain	-	5
ISO 10545-13	Chemical resistance	UB min.	UA ULA UHA
ISO 10545-8	Coefficient of linear thermal-expansion	-	60 $6,3 \times 10 \text{ c}'$
ISO 10545-5	Impact resistance	-	0,88
EN 12825	Static load	-	Centre 9,6 Kn Centre point of sides 6,5 Kn Diagonal 8,19 Kn (CLASSE 3)
	Dymanic laod capacity - hand object impact test	-	Test not passed
	Dymanic laod capacity - soft object impact test	-	Test passed
EN 1339	Bendind strength - breaking force in N	Kn 14,38	classe 14
ENV 12633	Pendulum Test - Slip resistance	$> / = \text{CL1}$	CL 2
DIN 51130	Slip resistance	-	R11
DIN 51097	Slip resistance	-	A + B + C min.
DIN 51094	Color resistance to light	Tiles must not produce noticeable colour variation	Resistant
DM 236/89 B.C.R.A.	Slip resistance	-	$> 0,40$
ASTM 1028-07 BOT 3000	Slip resistance	-	$> 0,60 \text{ WET}$ $> 0,60 \text{ DRY}$ $> 0,42$
EN 13501-1	Fire resistance	-	A1 - A1 FL



BAGNI CHRISTIAN, RIMINI, ITALY



I'PARK MALL, SEOUL, KOREA



I'PARK MALL, SEOUL, KOREA



ERACLE SPORTS CENTER, COMO, ITALY



BUCAREST, ROMANIA



BRISBANE, AUSTRALIA



RESIDENZA SAN MARTINO, LUGANO, SWITZERLAND



ADMIRAL PARK HOTEL, BOLOGNA, ITALY



HOTEL, STOCKHOLM, SWEDEN



PRIVATE HOUSE, POLAND



THE THEATER OF DISAPPEARANCE
Adrian Villar Rojas
Metropolitan Museum of Art, New York
14/04/2017 - 29/10/2017

Photos:
CANCOS TILE AND STONE

